



Partnering with Public Housing Agencies  
to End Homelessness

# HOMELESSNESS 20+ YEARS AGO

- Approximately 8,000 people on the streets\*
- Homeless Encampments Throughout the Urban Core
- Fewer than 1,000 beds available

\*using duplicator model

# HOMELESSNESS 20+ YEARS AGO

- No meaningful funding
- No identified plan to address the increasing problem
  - Loose-knit collection of social service agencies and faith-based organizations serving the homeless
  - Little to no coordination among the system of services
- No defined leadership/involvement by the private sector/business community

# ADDRESSING HOMELESSNESS TODAY

## ➤ Food & Beverage Tax

- 1<sup>st</sup> dedicated source of funding for homelessness in the country
- 85% for homeless; 15% for domestic violence
- Collected at all restaurants in Miami-Dade County\* that have >\$400k in sales and a liquor license

## ➤ Community Plan to End Homelessness: Priority Home

## ➤ 27-Member Board

- Administers 1% Tax
- Implements Homeless Plan
- Serves as “Lead Agency” for the Continuum of Care

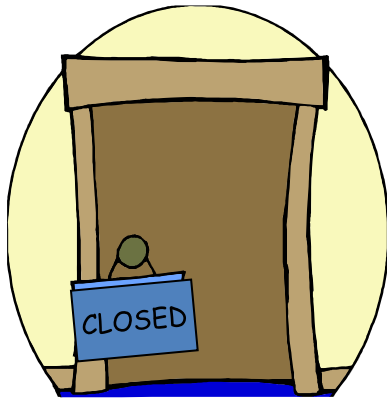
# ADDRESSING HOMELESSNESS TODAY

- Approximately ~~8,000~~ 1,008 people on the streets (January 24, 2019 Count)
  - Total of 2,464 sheltered
  - **TOTAL COUNT = 3,472 (Lowest total on record!)**
- ~~Homeless encampments throughout urban core~~
  - No large homeless encampments
- ~~Fewer than 1,000 beds available~~
  - 8600+ beds/units in the Continuum of Care

# ADDRESSING HOMELESSNESS TODAY

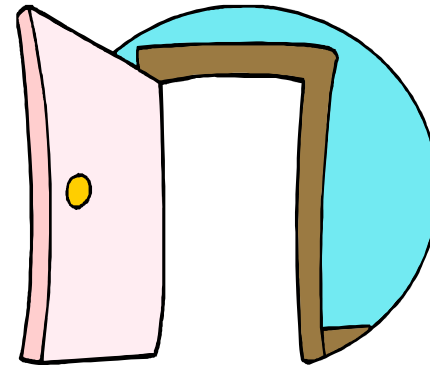
## **“Close the Front Door”**

*Reduce the number of people who become homeless*



## **“Open the Back Door”**

*Rapidly place homeless people back into housing*



Prevent homelessness whenever possible.  
Ensure homelessness is rare, brief and one-time.

# PHA PARTNERSHIPS

- Public Housing Authority Collaborations
  - **Hialeah**
    - Section 8 HCV (75)
    - 811 Mainstream Vouchers for Non-Elderly Disabled (50)
    - Family Unification Program (81)
    - Move-Up (10)
  - **Homestead**
    - Section 8 HCV (8) + another (10) committed
    - VASH (6)
    - Family Unification Program (28)





# PHA PARTNERSHIPS

- Public Housing Authority Collaborations
  - **Miami-Dade**
    - Section 8 Veteran/Chronic Set-Asides (120)
    - Project Based Vouchers (143)
    - Public Housing Rehab (45)
    - 811 Mainstream Vouchers for Non-Elderly Disabled (44)
    - VASH (271)
    - Multifamily Homeless Preference (11)
  - **Miami Beach**
    - Move-Up (10)
    - VASH (236)





# VETERAN & CHRONIC HOMELESS PHA PARTNERSHIP

- 120 Vouchers (Miami-Dade)
- CoC layers w/support services for CH referrals (\$200K)
- Revised Orders of Priority:
  - 1<sup>st</sup> Priority – Individuals/couples with at least one veteran who has served on active duty, regardless of discharge, experiencing CH and not eligible for VASH
  - 2<sup>nd</sup> Priority – Individuals/couples with at least one member experiencing CH
  - 3<sup>rd</sup> Priority – Individuals/couples with a disability with longest period of continuous or episodic homelessness w/severe service needs

# Effective End To Veteran Homelessness



July 18, 2018

Ronald L. Book, Chairman  
Miami-Dade County Homeless Trust  
111 NW 1st Street, 27th Floor  
Miami, FL 33128

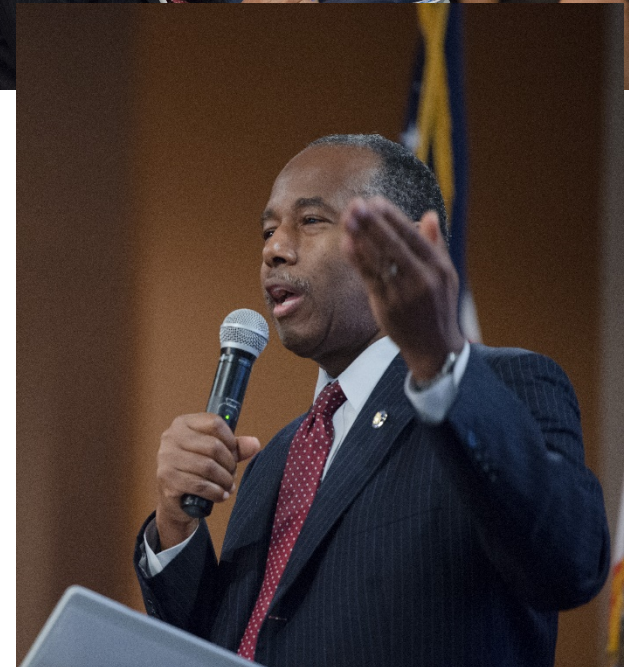
Dear Mr. Book:

Thank you for your commitment to ending Veteran homelessness. Your leadership—and that of your colleagues throughout the region—has been instrumental as we work together to ensure that every Veteran in our country has a safe and stable home.

The United States Interagency Council on Homelessness, Department of Housing and Urban Development, and Department of Veterans Affairs are pleased to confirm that Miami-Dade County has effectively ended homelessness among Veterans. We are also confident that the infrastructure and systems you have built will ensure that any Veteran who does experience homelessness in the region will get the support they need to quickly obtain a permanent home.

Along with our federal partners, we recognize and appreciate your extraordinary team and we look forward to continuing our collaboration as we work to end homelessness for everyone in our country.

Sincerely,





# PUBLIC HOUSING REHAB PARTNERSHIP

- **45 Units** (Miami-Dade)
  - CoC renovates Public Housing units in need of serious repairs
  - Benefits:
    - CoC provides referrals of homeless households into renovated housing units
    - Public Housing Authority improves its utilization rates
  - CoC agreed to provide PHA \$10K-11,500K per unit (\$250K total)
  - CoC retains referrals rights

# FAMILY UNIFICATION PROGRAM (FUP) PARTNERSHIP

- 109 vouchers – (81 Hialeah & 28 Homestead)
- Referrals made by Managing Entity for Public Child Welfare Agency, but informed by CoC Housing Specialist
- Prioritization for homeless singles, youth, and families
- Trust sits on FUP review team





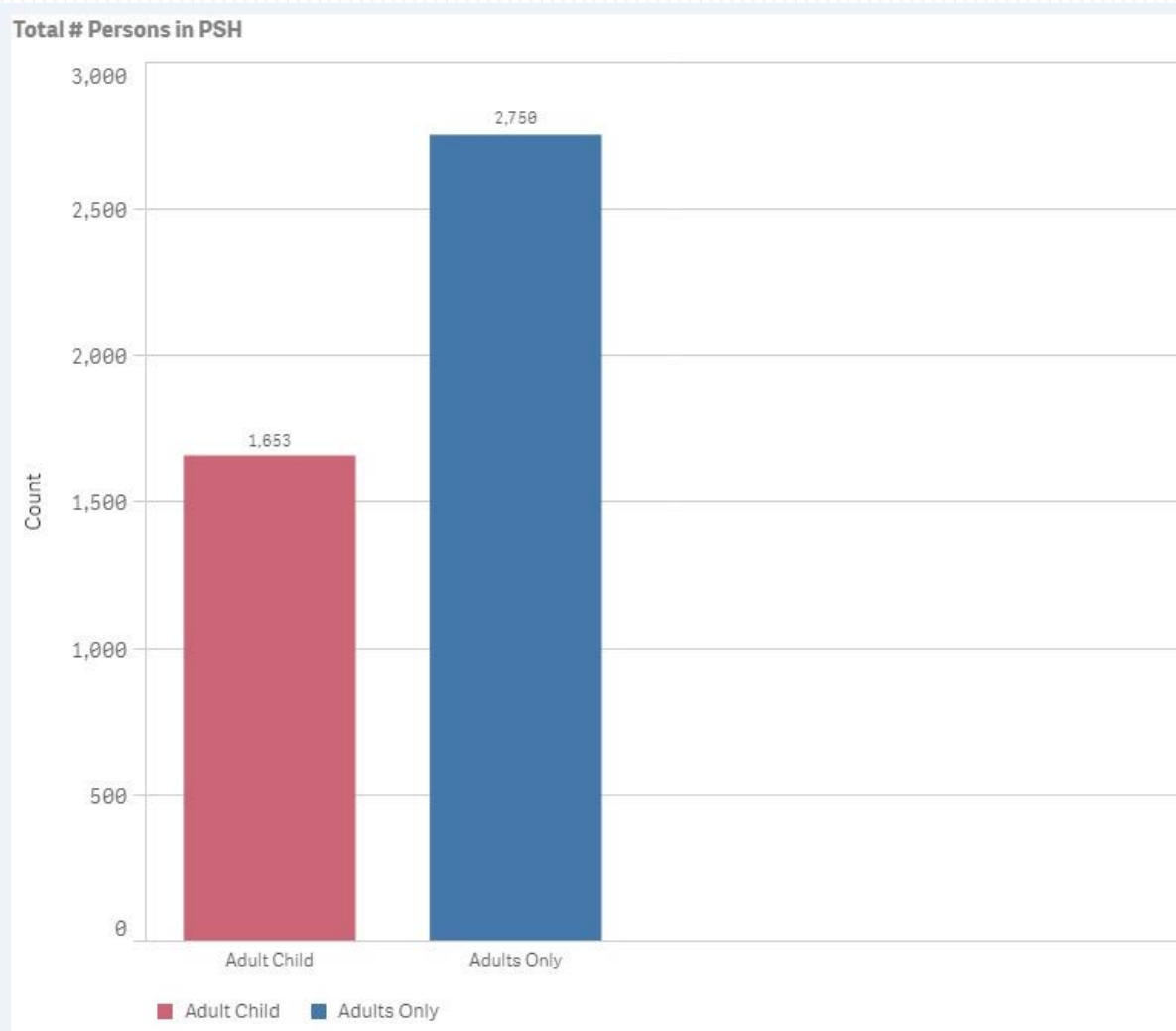
# MOVE-UP PARTNERSHIP

- 54 vouchers - 811 Mainstream (44) – Miami-Dade
  - Section 8 HCV (10) – Miami Beach
  - (10) – Hialeah
- Exit Strategy for PSH
- MOU w/PHA
- Assessment Tool Development
- Orders of Priority for Move-Up
  - 1<sup>st</sup> Priority - PSH reallocated or rejected through the HUD NOFA
  - 2<sup>nd</sup> Priority- Formerly homeless households w/minor children
  - 3<sup>rd</sup> Priority – Formerly homeless households without children



# Non-Elderly Disabled in CoC PSH

## Household Type (Families vs. Singles)



# PHA PARTNERSHIPS

- **Know your PHA's**
  - Use HUD Field Office to make introductions
  - Understand portfolios, politics, needs & challenges
- **Be Proactive: Don't wait for PHA's to call you**
  - Seek Preferences & Set Asides
  - Partner on Solicitations
  - Take the lead on shaping MOU's
  - Ask to partner on landlord engagement events
  - Go back for more
- **Be Responsive**
  - Ensure timely referrals
  - Reaffirm supports for clients and landlords
  - Assist with troubleshooting



# QUESTIONS?

